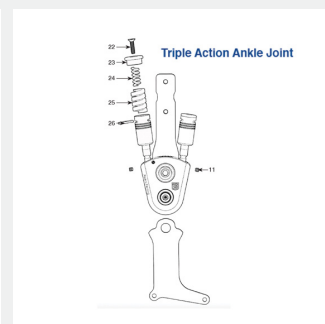
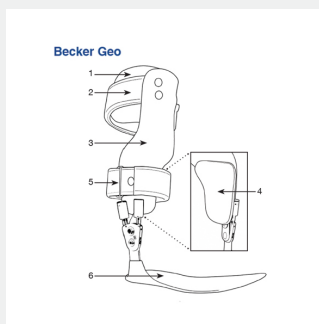


# BECKER GEO



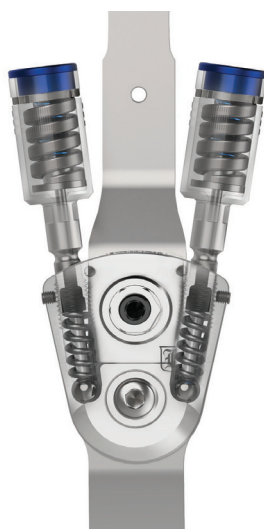
The Becker Gait Evaluation Orthosis (GEO) AFO is a prefabricated, carbon composite evaluation orthosis used to assess the benefit of an AFO on ankle and knee stability.

Using the Triple Action ankle joint, the GEO can also help determine the appropriate booster spring configuration for definitive Triple Action AFOs. Additionally, the GEO may be used as a therapeutic aid for patient rehabilitation and mobilisation.

## Features:

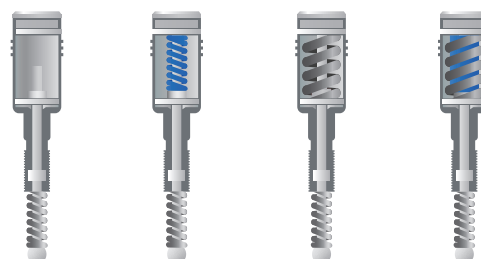
- Triple action joint allows independent adjustment of:
  - Ankle alignment
  - PF/DF ROM
  - PF/DF spring stiffness
- 4 high stiffness spring options
- Removable ankle strap for management of calcaneal valgus
- Removable lateral ankle pad for resisting varus

## Spring Options



*\*The Booster Spring Unit cannot be removed from the Triple Action component housing. Doing so will destroy the Booster and void the product warranty.*

*\*Internal bottom spring under boosters is covered with a lifetime warranty for defects in materials and workmanship.*



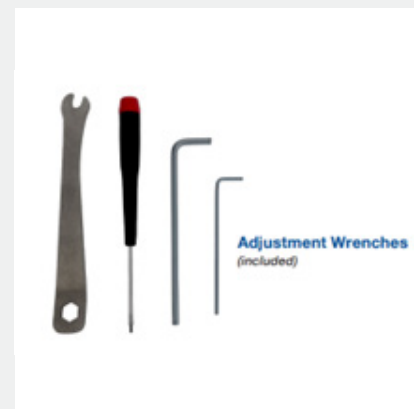
Spring Configuration	1	2	3	4
<b>Top Spring</b>	None	Standard	High	High & Standard
<b>Stiffness</b>	X1 (low)	X2 (moderate)	X4 (high)	X5 (very high)
<b>Max. ROM</b>	10°	10°	10°	10°

## Components:

The GEOs come fully assembled with spring configuration 4, and includes two adjustment tool kits, product manuals, tuning procedure and carrying case.

## Tuning Procedure:

Designed to be used with Becker's evidence-based Systematic Tuning Procedure for Triple Action Ankle Joints



Code	Description	Shoe size	Weight rating
3B00-GEO-SP	Becker Triple Action GEO - Small Pair	> EU36 / US7	<90kgs
3B00-GEO-LP	Becker Triple Action GEO - Large Pair	> EU41 / US9	
3B00-GEO-PADS	Becker Triple Action GEO - 2 piece pad set	-	-

Please contact [orthotics@opchealth.com.au](mailto:orthotics@opchealth.com.au) for pricing and more information.